

5 Bedroom Premium

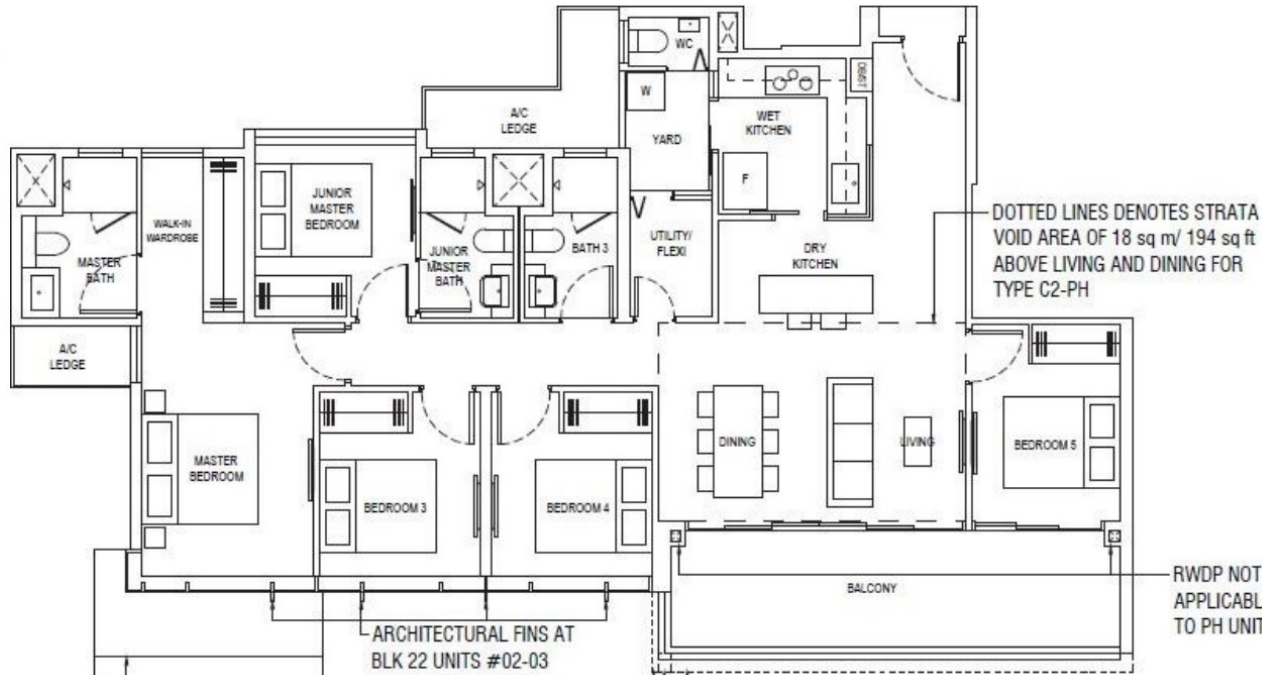
Type C2

140 sqm / 1507 sq ft

BLK 22
#02-02* to #09-02*, #02-03 to #09-03

BLK 26
#02-10* to #16-10*

BLK 28
#02-15 to #16-15, #03-16* to #16-16*



LINE OF CANOPY BELOW
APPLICABLE TO UNITS:
#02-02*, #02-03

LINE OF CANOPY BELOW
APPLICABLE TO UNITS:
#02-10*, #02-15

RC LEDGE AT:
BLK 26: 2ND, 4TH, 7TH,
11TH & 14TH STOREYS
BLK 28: UNITS #02-15,
#04-15, #07-15, #11-15
& #14-15

RC LEDGE AT:
BLK 22: 2ND STOREY
BLK 28: UNITS #07-16*, #11-16* & #14-16*

RC FRAME AT:
BLK 22: 2ND TO 10TH STOREYS
BLK 28: UNITS #02-15 TO 03-15,
#07-15 TO #10-15 &
#14-15 TO #17-15
UNITS #07-16* TO #10-16* &
#14-16* TO #17-16*

DOTTED LINES DENOTES STRATA
VOID AREA OF 18 sq m/ 194 sq ft
ABOVE LIVING AND DINING FOR
TYPE C2-PH

RWDP NOT
APPLICABLE
TO PH UNITS

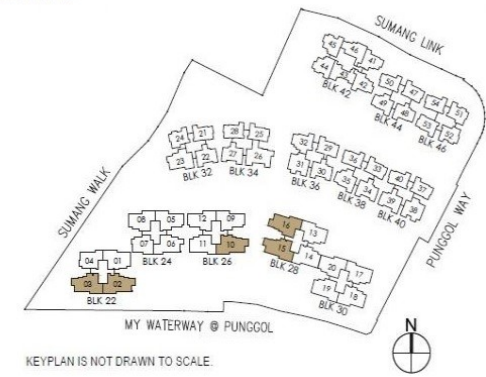
Type C2-PH

158 sqm / 1700 sq ft
INCLUDING STRATA VOID OF 18 sqm / 194 sq ft
ABOVE LIVING & DINING. APPROXIMATE 4.4m
FLOOR TO CEILING HEIGHT AT LIVING & DINING

BLK 22
#10-02*, #10-03

BLK 26
#17-10*

BLK 28
#17-15, #17-16*



KEYPLAN IS NOT DRAWN TO SCALE.